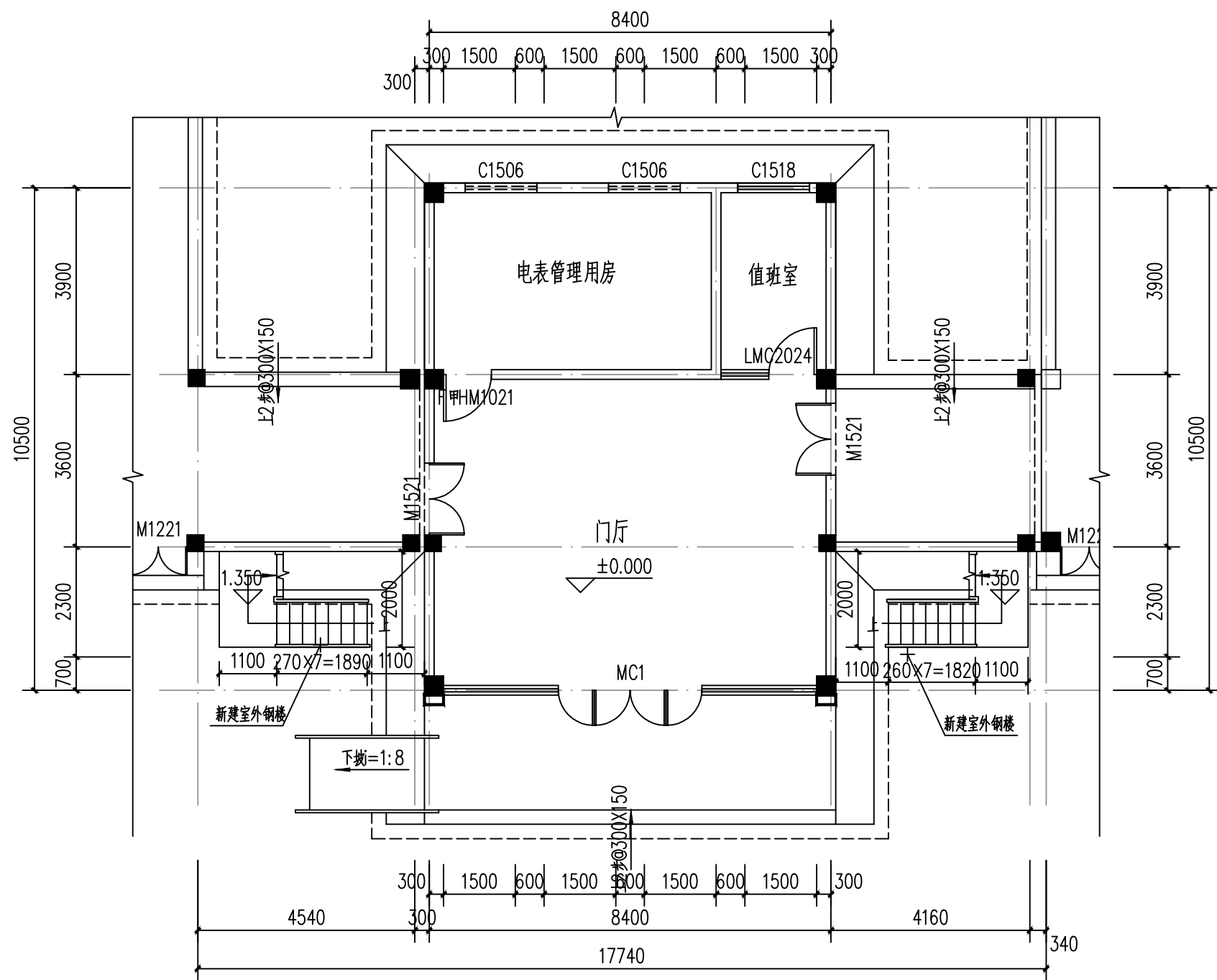


# 社区楼梯改造项目

施工图设计

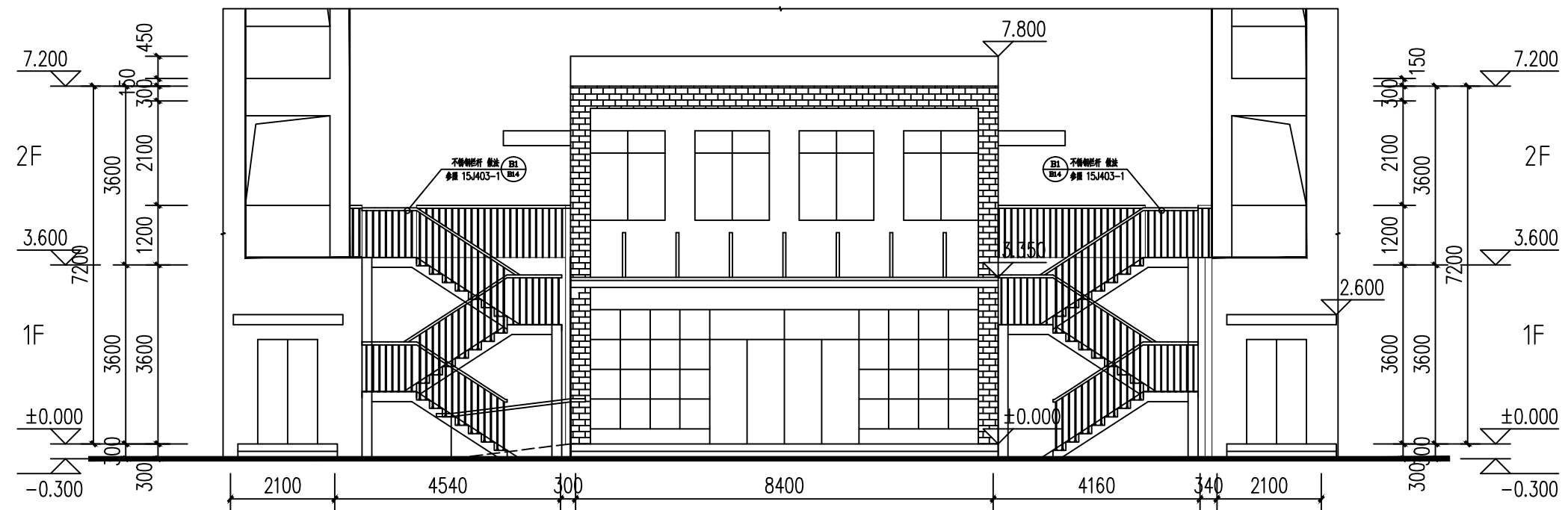
二零二二年六月



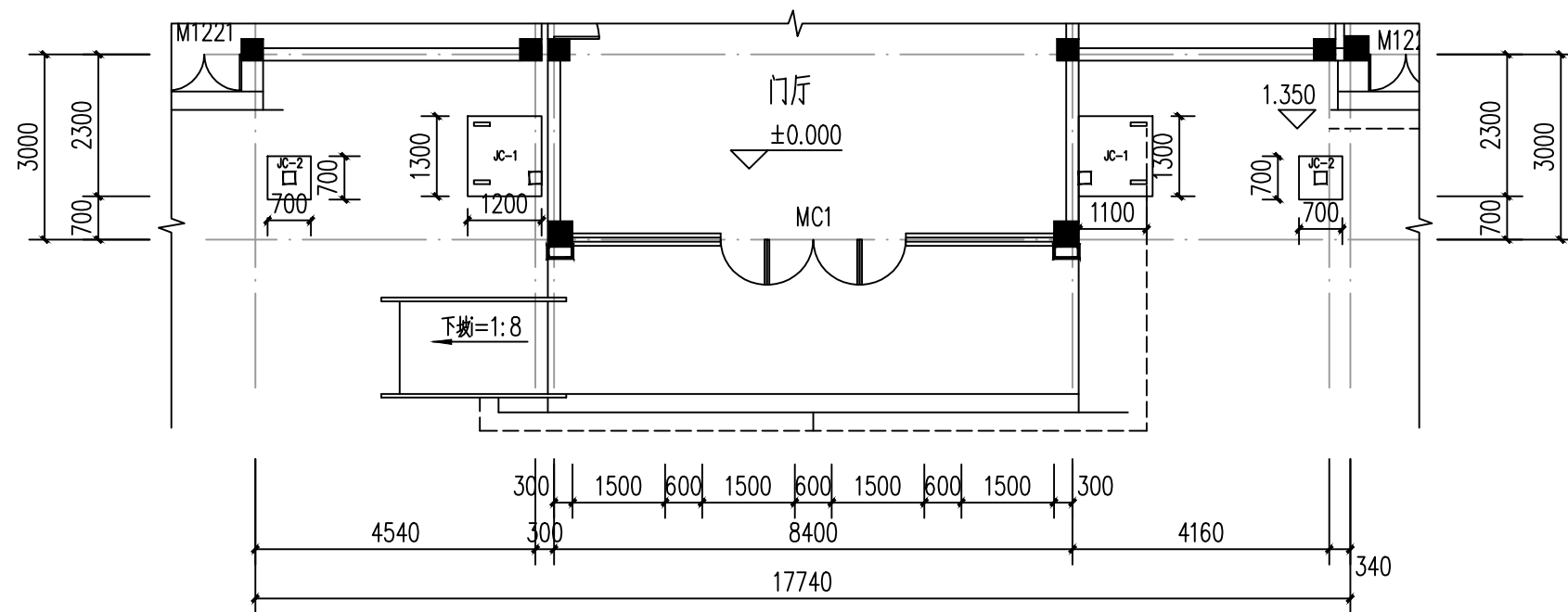
一层平面图 1:100

注：同等规模样式的楼梯改建项目共计4处，分设于4栋学生宿舍楼。

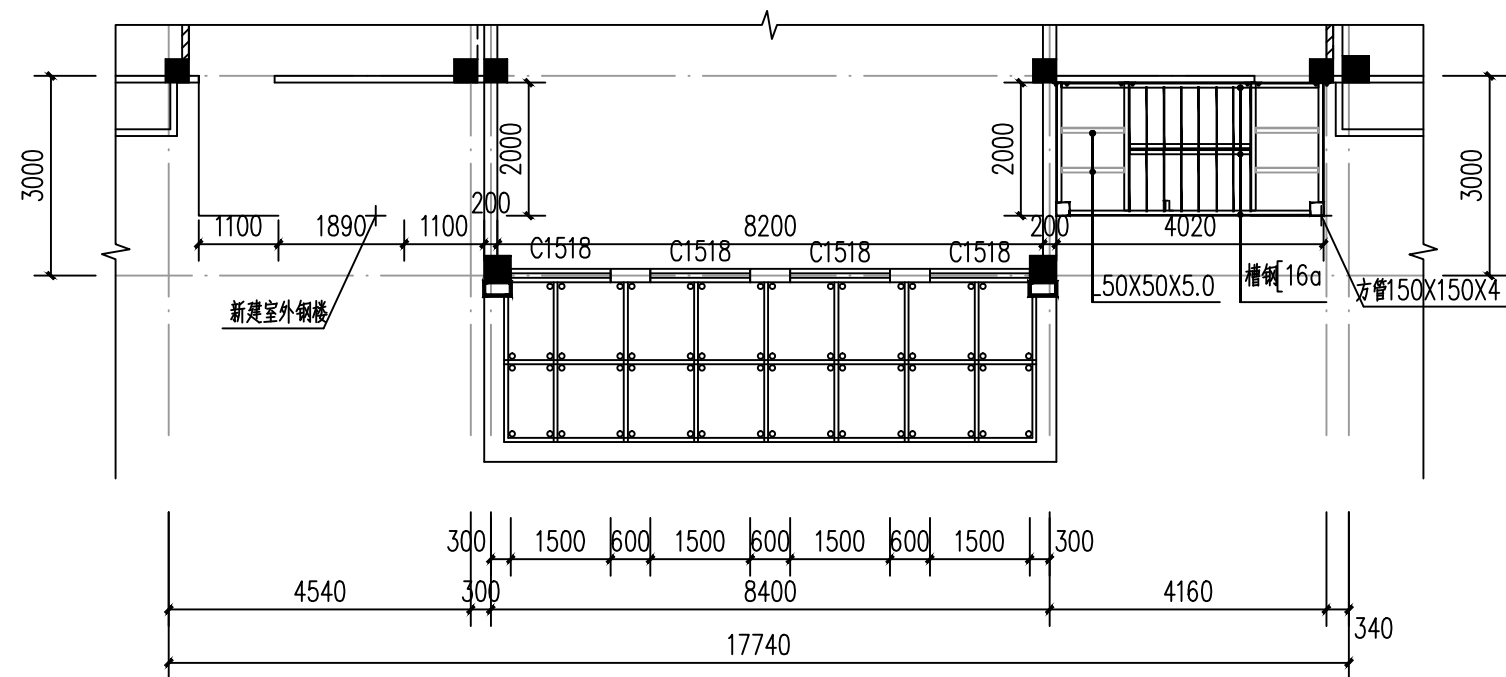




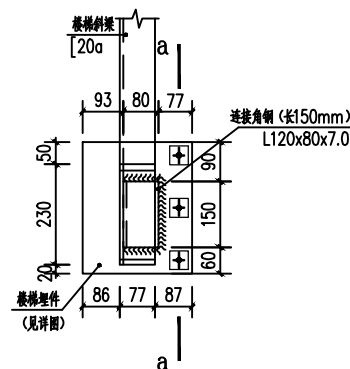
立面图 1:100



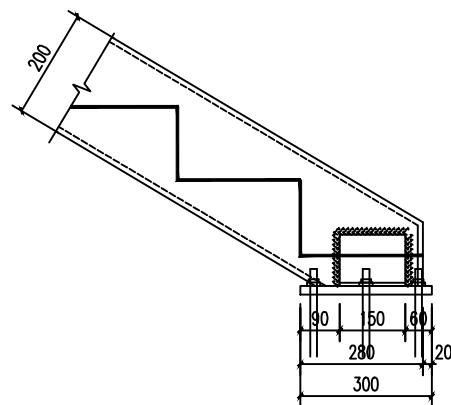
楼梯基础图 1:100



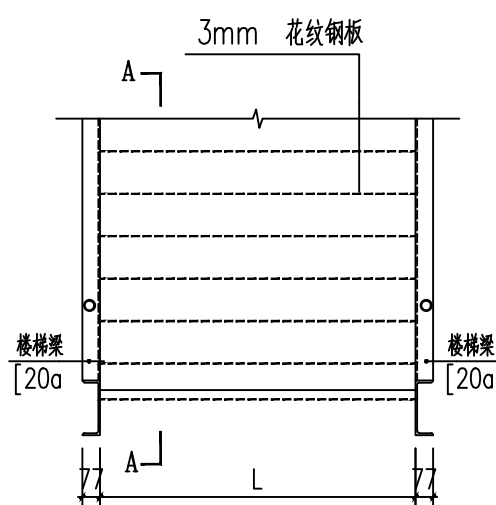
楼梯结构平面图 1:100



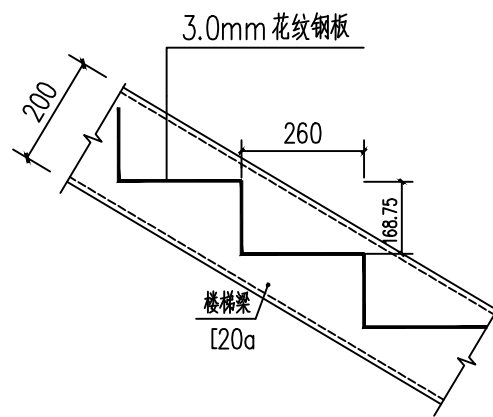
接地楼梯梁节点详图



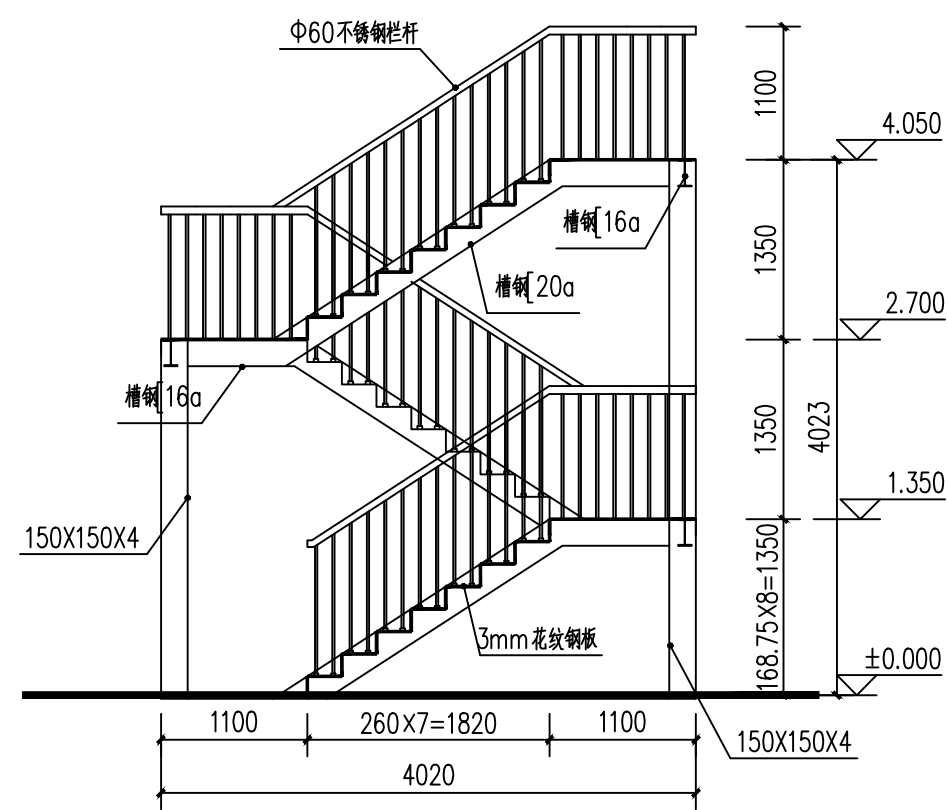
a - a 1:10



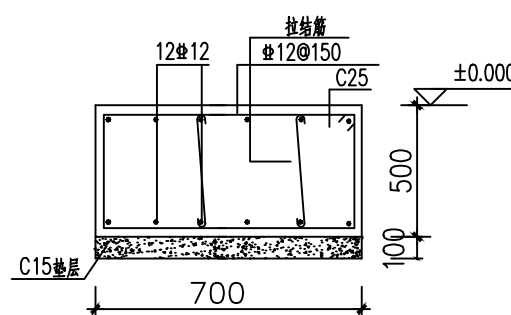
梯段大样图



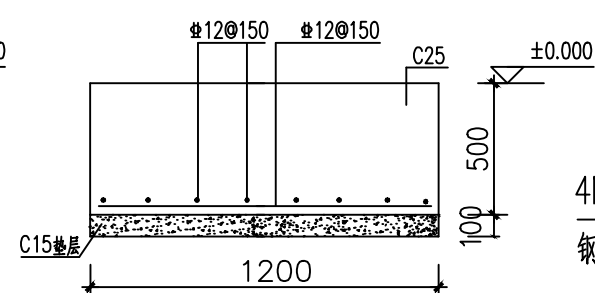
A - A 1:10



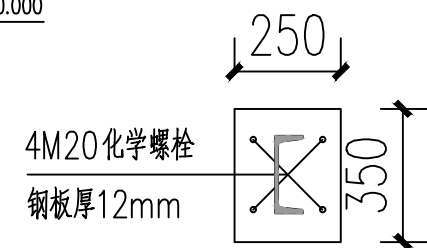
室外疏散钢楼梯结构剖面图 1:50



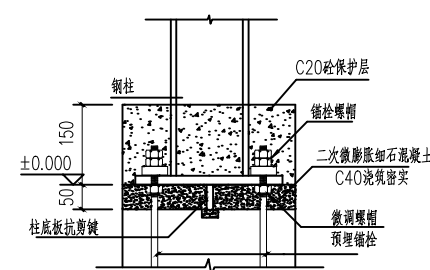
JC-2配筋大样  
梯柱梯梁基础



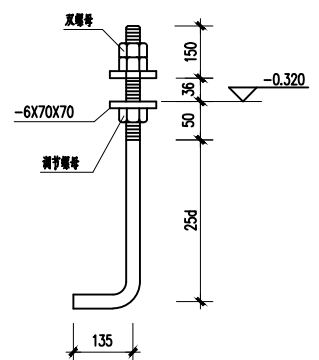
JC-1配筋大样  
梯柱梯梁基础



与混凝土构件连接的大样



柱脚二次灌浆做法  
混凝土保护层厚度不小于50并将肋板全部包裹



锚栓大样图  
Q345B